

HLP Forward View

25 October 2016



01

Background to Healthy London Partnership

Background to London-wide transformation

In 2014, two publications set out London's transformation priorities



**NHS Five Year
Forward View**



**Better Health for
London**

The NHS *Five Year Forward View* set out a broad strategy for health and care improvement and *Better Health for London* provided detailed recommendations on how to deliver this within the London context.

Healthy London Partnership was formed as a collaboration between London's 32 CCGs and NHS England London to respond to the strategy and recommendations for London.

Healthy London Partnership is a portfolio of transformation programmes

Upgrade in prevention and public health

Prevention



Designing care around Londoners' needs



Children and Young People



Mental Health



Cancer



Homeless

Transforming how care is delivered to every Londoner



Urgent & Emergency Care



Primary Care



Specialised Care

Making change happen



Digital



NHS Estate



Funding & Incentives



Workforce



Personalisation

Central Portfolio Management, Comms & Engagement

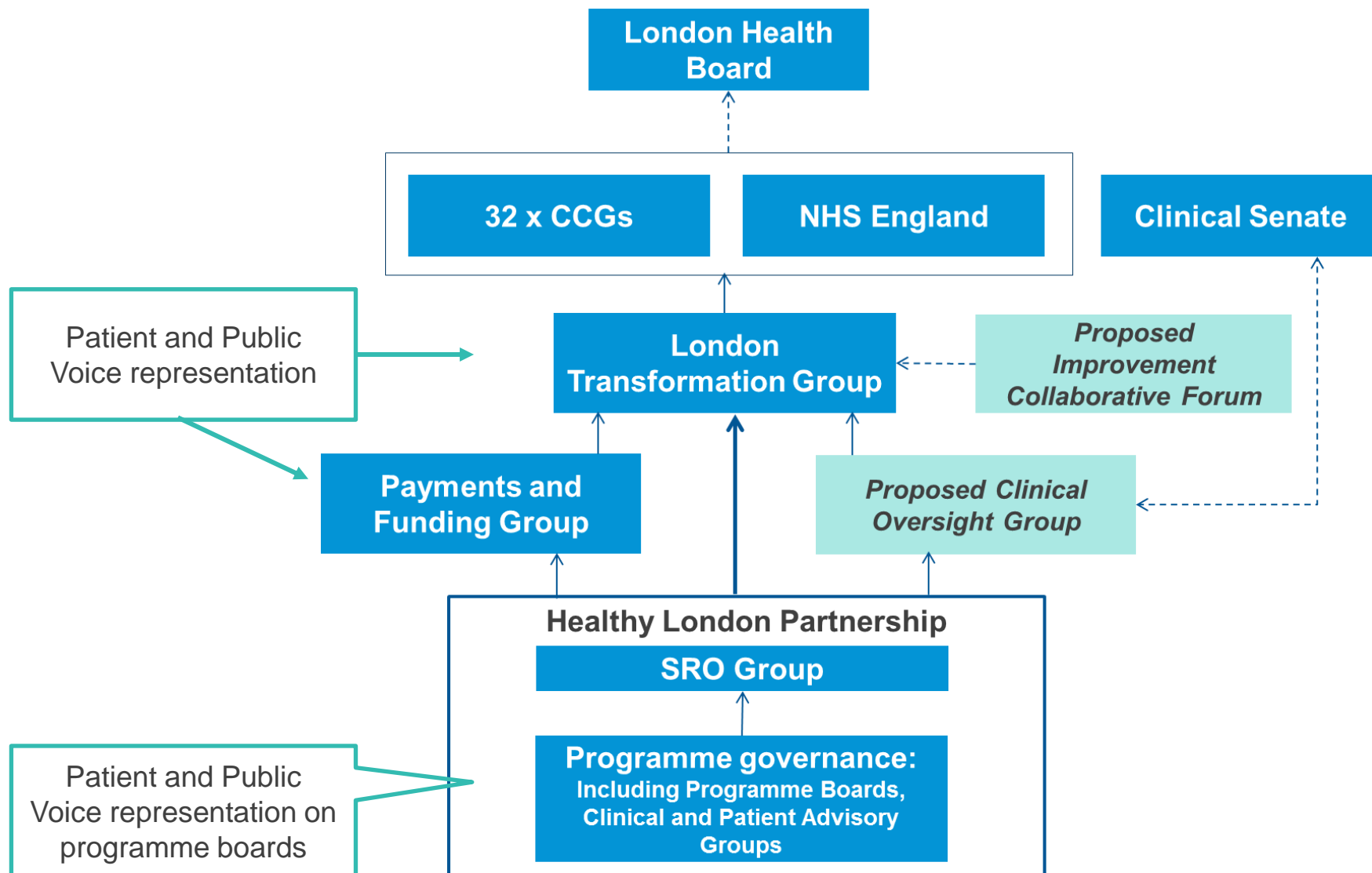


Improvement Collaborative



Devolution

The current HLP governance structure



Since mobilisation in 15/16 HLP has delivered a number of key achievements

- ✓ Developed **specifications for urgent and emergency care facilities** based on London Quality Standards. 500 Londoners lives could be saved if weekend care were the same
- ✓ Developed **London standards for asthma care** for children and young people
- ✓ NHS 111 in London now has a **patient relationship manager system** in place, which launched at the end of 2015; connecting Londoners to their care records
- ✓ Set ambitious new standards for primary care through the **London Transforming Primary Care Strategic Commissioning Framework** so 70% of population have access to 8-8 service by 2017/18
- ✓ Produced the **Case for Change for investing in Personalisation** and Self-Care which highlighted that 75% of Londoners with several Long Term Conditions say each is treated separately
- ✓ Developed **on-line referral forms for GPs** when referring patients with a suspected cancer. 1000 lives could be saved every year if London cancer survival rates matched best in Europe
- ✓ Successfully delivered the **London Estates Database for CCGs** detailing all our assets.
- ✓ Developing **solutions to childhood obesity** which affects more than one in three children in Year 6 via the Healthy Communities initiative
- ✓ Driving forward **healthier workplaces** as more than half of adults in London are obese
- ✓ Supporting London to implement **new access and waiting time standards** for people experiencing psychosis for the first time.

02

The HLP Review

Introduction to the HLP Review

In May 2016 Healthy London Partnership (HLP) undertook an initial review of its activity in light of:

- National policy change since HLP was established, particularly with the **emergence of Sustainability & Transformation Plans (STPs) as mandated local 'structures'**
- STPs including a **broader range of partners**, with joint leadership by **Commissioners, Providers and Local Authorities**



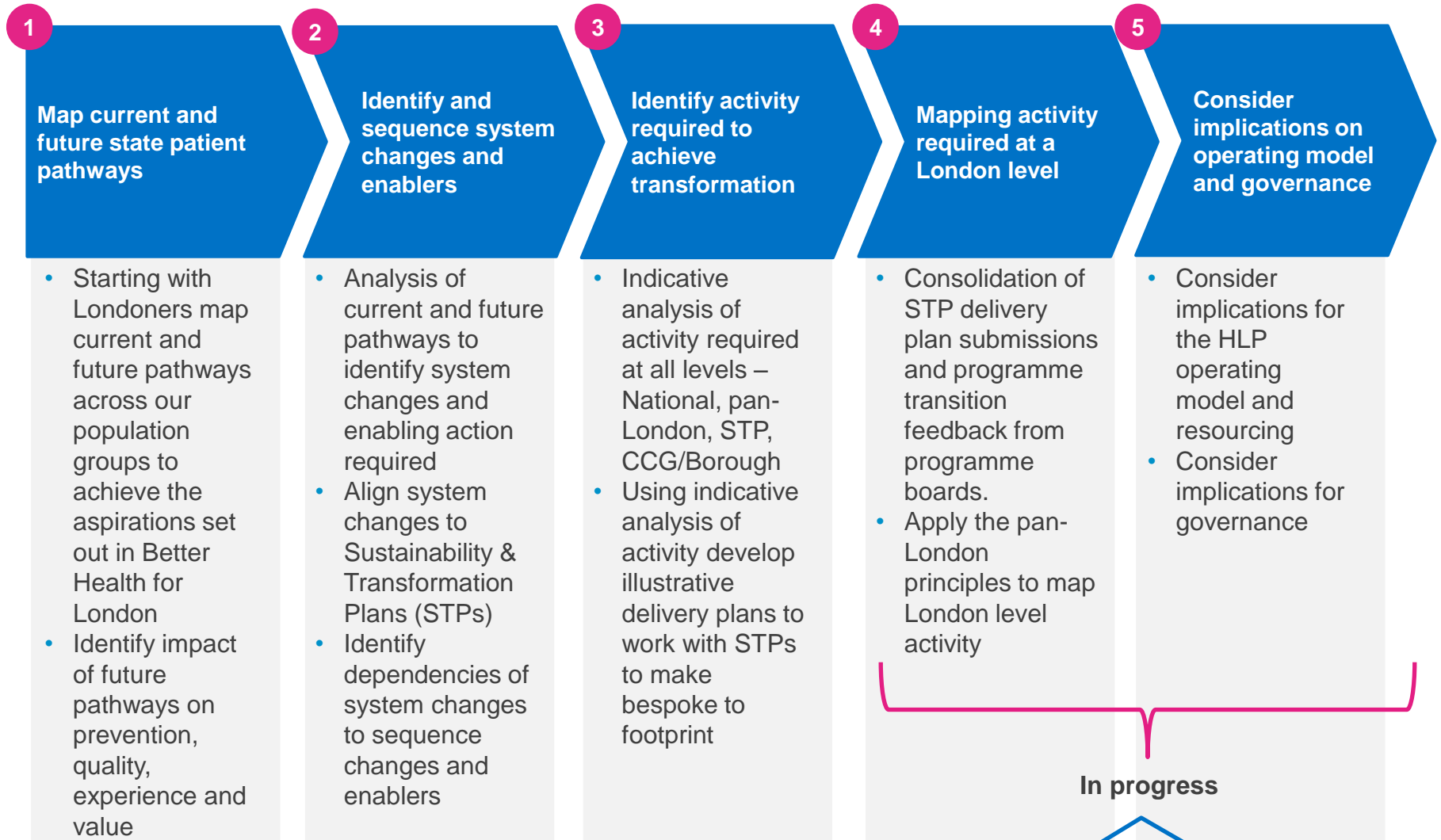
An initial review of HLP programme deliverables showed that the **majority of HLP's focus was delivering commissioning and implementation support to STPs**

Discussion with Senior Responsible Officers and London Transformation Group (LTG) members on this initial analysis and how HLP should develop has taken place. Discussion has highlighted the need for HLP to interface with emerging STP structures to deliver two parallel functions:

1. **Delivery of products and support that are best done once for London** e.g. Maximising economies of scale and providing a single voice for London to campaign for investment
 2. **Providing a strategic function for London** e.g. Identifying new opportunities for the region such as Devolution, Improvement Collaborative and Fire as a Health Asset
- The LTG agreed in June 2016 that an **in-depth review of the activity required to enable whole system transformation** is undertaken to inform how HLP should develop

This is the first of two updates that will outline the HLP Review underway and seek PPV views on principles that have been developed to determine London level activity; on the approach to prioritising work and governance including PPV involvement going forward

The in-depth review process is underway



PPV views are being sought today to inform steps 4 & 5 of the review.

Senior Responsible Officers defined four principles for pan-London activity

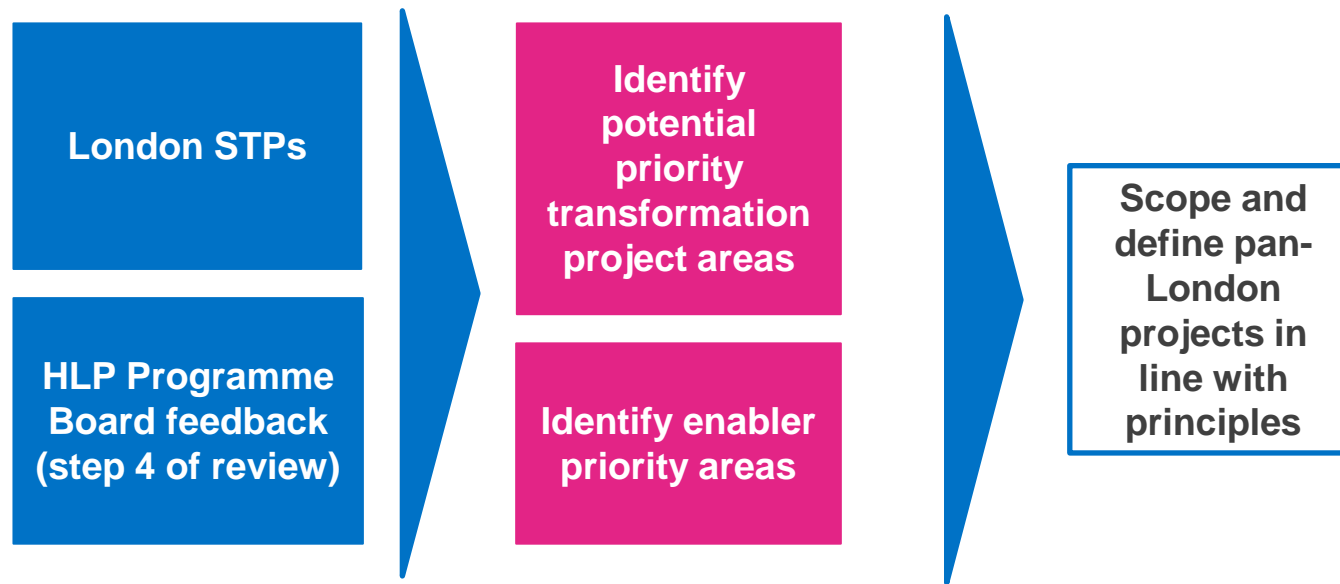
- HLP Programmes each have two Senior Responsible Officers, representing NHSE and CCGs. They have collectively set out four useful principles for any activity that is undertaken at a London level.
- These principles have been developed to determine when work to improve health and health services is best done at a London rather than local level. The principles will continue to inform the wider HLP review and were applied in Programme Board discussions of suitable pan-London activity.

Pan-London Principles

1. **Horizon scanning** and providing a voice for London e.g. lobbying National colleagues for funding / approaches to transformation that best support London as a whole, influencing the Mayor, the London Health Board, etc
2. **Establishing consistent standards of care** that all areas can benefit from and can commit to work towards in our 'offer' to Londoners
3. **Developing solutions for consistent issues that are best delivered once for London** e.g. benefiting from economies of scale
4. **Ensuring HLP activities remain engaged with local delivery** e.g. providing regional knowledge sharing capability

For Discussion: What are the group's views on the principles that have been developed to determine when work is best done at a London rather than local level to transform health and health services?

The proposed approach to prioritising pan-London activity



For Discussion: What are the group's views on the proposed approach to prioritising work that is done at a London level?

Next steps

- This is the first of two updates on the HLP Review underway to seek PPV views on steps 4 & 5 of the in-depth review
- Having considered the existing programme structure and governance PPV members are asked to share their initial views on how HLP can strengthen governance and PPV involvement going forward

For Discussion: What are the group's initial views on how Londoners should or could be involved in the HLP programme going forward?

- These initial comments and those captured from all of today's discussion will input into the mapping of London level activity and considerations for the operating model and governance going forward
- The second HLP update will be shared at the 22nd November PPV meeting